

rivestimenti
upholstery

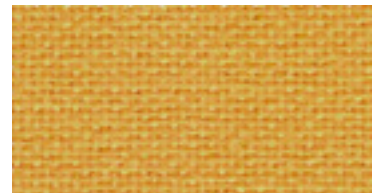
Diemme.



9110



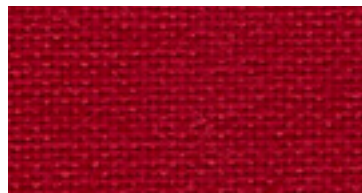
2024



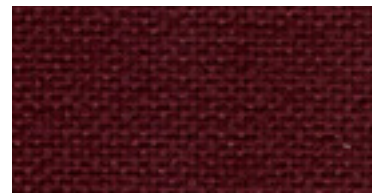
3090



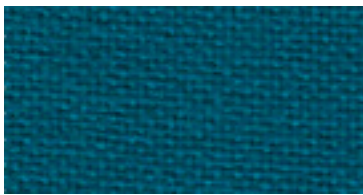
3036



4027



4017



6091



6095



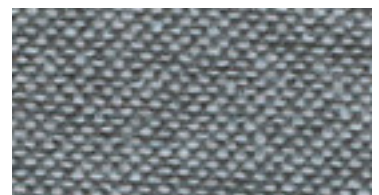
6098



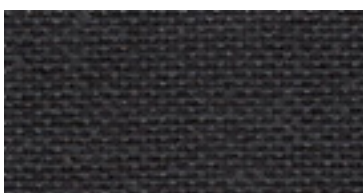
7025



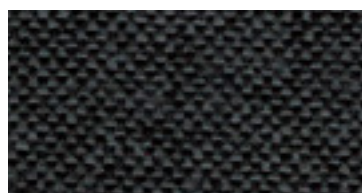
8078



9804



8017



9281



8033

JET / CAT. F

Composizione

100% Poliestere - Trevira CS®

Peso

gr./m² 260 ± 5%

Altezza

cm 140

Abrasione - Test Martindale

UNI EN ISO 12947/2 65.000 cicli

Solidità alla luce

UNI EN ISO 105-B02 6

Pulizia

Non spazzolare e usare con regolarità l'aspirapolvere.

Lavaggio



Omologazioni

Le proprietà ignifughe sono intrinseche nella fibra e non dovute a trattamenti aggiuntivi.

I Classe 1

F Classe M1

D Classe B1 norme DIN 4102

UK Crib 5

EN EN 1021/1-2

Differenze colore

Leggere differenze di colore fra una bagno e l'altro sono da considerarsi normali.

Composition

100% Polyester - Trevira CS®

Weight

gr./m² 260 ± 5%

Width

cm 140

Abrasion test - Martindale

UNI EN ISO 12947/2 65000 turns

Lightfastness

UNI EN ISO 105-B02 6

Cleaning

Do not brush. Only use a vacuum-cleaner regularly.

Washing



Approvals

The flame-retardant properties are inherent to the fibre and they are not due to additional treatments.

I Class 1

F Class M1

D Class B1 standards DIN 4102

UK Crib 5

EN EN 1021/1-2

Colour differences

Slight differences between colour batches have to be considered normal.

Diemme.

PLANET - SURROUND / CAT.F



6 / 101



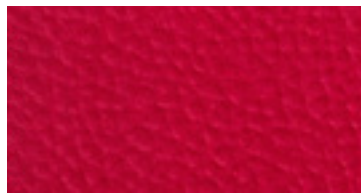
4008 / 109



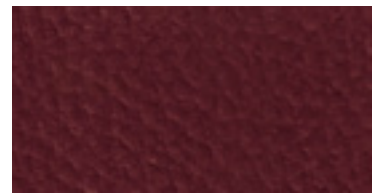
71 / 105



120



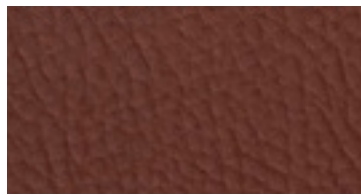
680 / 136



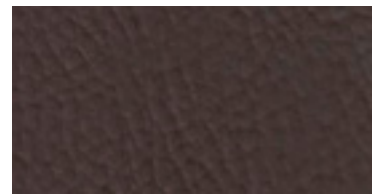
726 / 135



1110 / 110



1304 / 126



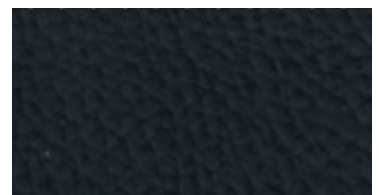
119



106



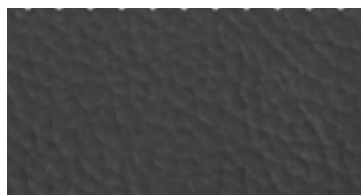
4975 / 116



4947 / 131



114



1984 / 125



991 / 133

PLANET - SURROUND / CAT. F

L'articolo è trattato con prodotto antibatterico, è anallergico e impermeabile.

The article contains antibacterial agent, it is anti-allergic and waterproof.

Composizione

87,5% PVC - 12,5% COT

Peso

640 g/m²

Altezza

140 cm

Resistenza all'abrasione - Test Martindale

ISO 5470-2/2003 100.000 cicli

Solidità alla luce

UNI EN ISO 105-B02 6-7

Pulizia

Spolverare delicatamente e in caso di macchie lievi passare la superficie con un panno umido o con una soluzione di detergente neutro, risciacquando con acqua, senza strizzare. Per le macchie localizzate e più ostinate (olio, grasso, cosmetici, inchiostri, caffè, liquori, chewing-gum ecc.) si consiglia di seguire le seguenti istruzioni: disciogliere tempestivamente la macchia con alcol etilico diluito (liquido incolore) in acqua al 20%, tamponare e trattare successivamente con una soluzione di detergente neutro, risciacquare bene.

I colori chiari, non devono essere messi a contatto con tessuti e capi d'abbigliamento trattati con coloranti non fissati, o con scarse solidità di tintura, onde evitare macchie ed aloni di coloranti di cui non possiamo garantire la pulitura.

Omologazioni

I UNI 9175 classe 1 IM

F NF P 92-503: M2

UK BS 5852 sect.11 crib 5

D DIN 4201-1: B2

AT OeNORM A3800-1: Q1

USA TB 117:2013

EN EN 1021-2

Differenze colore

Leggere differenze di colore fra una partita e l'altra sono da considerarsi normali.

Composition

87,5% PVC - 12,5% COT

Weight

640 g/m²

Width

140 cm

Abrasion test - Martindale test

ISO 5470-2/2003 100.000 cycles

Lightfastness

UNI EN ISO 105-B02 6-7

Cleaning

Dust gently and in case of light stains pass the surface with a damp cloth or a neutral detergent, rinse with water without squeezing. The following instructions are recommended for small located and more obstinate stains (oil, fat, cosmetics, ink, coffee, liquor, chewing-gum etc.): dissolve immediately with clear ethylic alcohol diluted in water to 20%, dab and then treat with a neutral detergent solution. Rinse abundantly.

To avoid permanent stains, the lighter colours of the article should not be brought into contact with textiles and clothing coloured with unfixed dyes. We cannot guarantee the ability to remove unknown dyes from light coloured product.

Approvals

I UNI 9175 classe 1 IM

F NF P 92-503: M2

UK BS 5852 sect.11 crib 5

D DIN 4201-1: B2

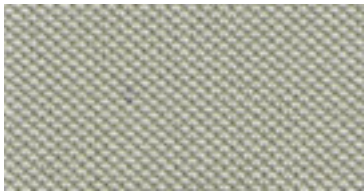
AT OeNORM A3800-1: Q1

USA TB 117:2013

EN EN 1021-2

Colour differences

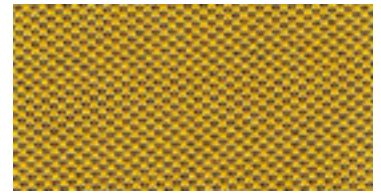
Slight color differences between one lot and another have to be considered within commercial tolerance.



1006



2519



3530



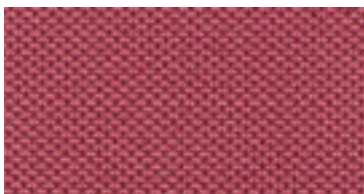
4030



4566



4528



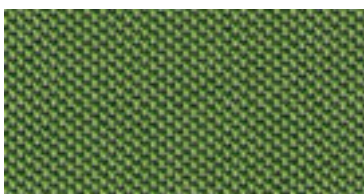
4079



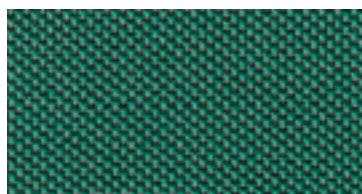
7504



6512



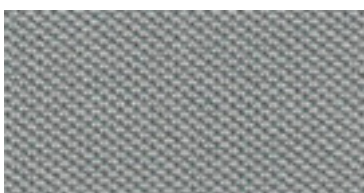
7521



7526



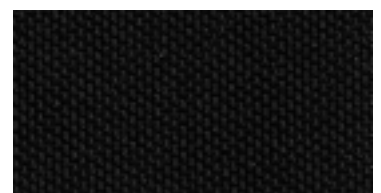
7033



8032



8504



8033

ONE / CAT. G

Composizione

100% Poliestere Riciclato



Peso

350 ± 5% g/m²

Altezza

150 ± 2% cm

Abrasione - Test Martindale

UNI EN ISO 12947-2 100.000 cicli ± 10%

Solidità Luce

UNI EN ISO 105-B02 6 (scale 5-8)

Pulizia

Aspirare regolarmente. Pulizia a secco professionale, in alternativa pulire con un panno umido.

Lavaggio



Omologazioni

I UNI 9175 Classe 1IM

USA California TB 117

UK BS 7176 Medium Hazard

UK BS 5852 Crib 5

EN 1021-1 Part. 1-2

Differenze colore

Leggere differenze di colore fra un bagno e l'altro sono da considerarsi normali.

Composition

100% Recycled Polyester



Weight

350 ± 5% g/m²

Width

150 ± 2% cm

Abrasion - Test Martindale

UNI EN ISO 12947-2 100.000 turns ± 10%

Lightfastness

UNI EN ISO 105-B02 6 (scale 5-8)

Cleaning

Vacuum regularly. Professionally dry clean or wipe clean with a damp cloth.

Washing



Approvals

I UNI 9175 Class 1IM

USA California TB 117

UK BS 7176 Medium Hazard

UK BS 5852 Crib 5

EN 1021-1 Part. 1-2

Colour differences

Slight differences between colour batches have to be considered normal.

Diemme.

BINGO ELAST - MIRAGE / CAT. G



629



625



651



53



120



231



386



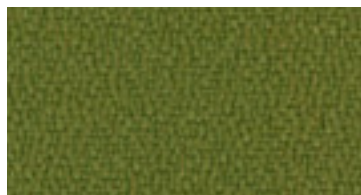
173



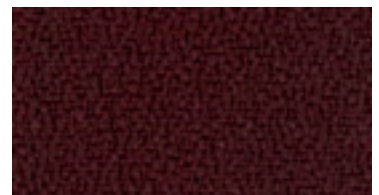
236



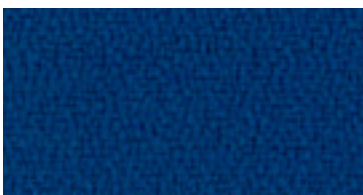
380



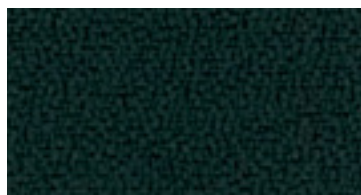
426



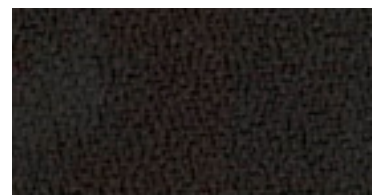
234



331



496



573

BINGO ELAST - MIRAGE / CAT. G

Composizione

100% Poliestere FR - Trevira CS

Peso

gr./mtl. 490 ± 10%

Altezza

cm. 140 ± 2%

Abrasione - Test Martindale

UNI EN ISO 12947:2000 100.000 cicli ± 20%

Solidità alla luce

Xenotest UNI EN ISO 105 B02 5 ± 1

Pulizia

Non spazzolare e usare con regolarità l'aspirapolvere

Lavaggio



Omologazioni

I Classe 1

F Certificato M1

D B1 DIN 4102

UK BS 5852 Crib 5

EN 1021-1 Part. 1-2

Differenze colore

Leggere differenze di colore fra una partita e l'altra sono da considerarsi normali.

Composition

100% Polyester FR - Trevira CS

Weight

gr.lm. 490 ± 10%

Width

cm. 140 ± 2%

Abrasion test - Martindale Test

UNI EN ISO 12947-2000 100.000 turns ± 20%

Lightfastness

Xenotest UNI EN ISO 105 B02 5 ± 1

Cleaning

Do not brush and use the vacuum-cleaner regularly

Lavaggio



Approvals

I Class 1

F Certificate M1

D B1 DIN 4102

UK BS 5852 Crib 5

EN 1021-1 Part. 1-2

Differenze colore

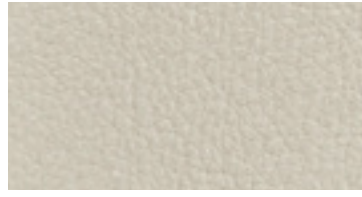
Slight differences between colour batches have to be considered normal.

Diemme.

CUBE / CAT. G



2000



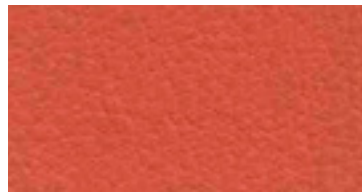
2003



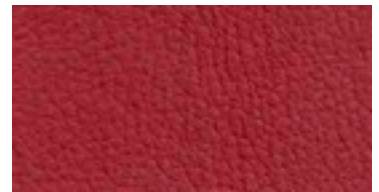
2105



2007



2006



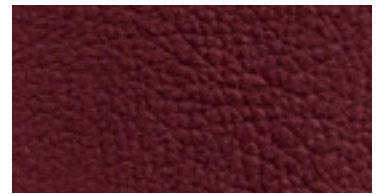
2005



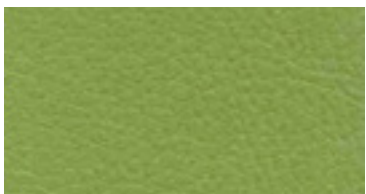
2009



2008



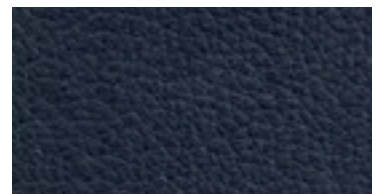
2004



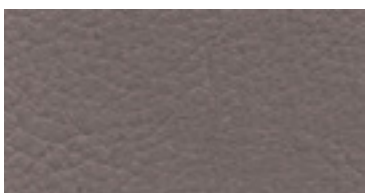
2017



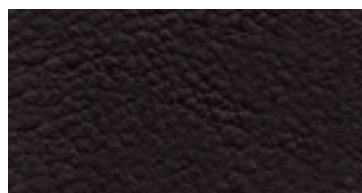
2002



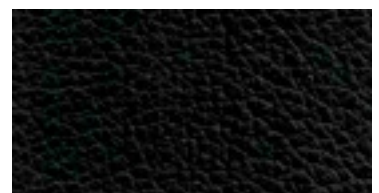
2011



2026



2028



2001

CUBE / CAT. G

Composizione

69% PVC 1% PU 30% COT/PES

Peso

gr./m² 520

Spessore

mm. 0,90

Altezza

cm. 140

Abrasione - Test Martindale

ISO 12947 (9kpa) 50.000 cicli

Solidità alla luce

UNI EN ISO 105- B02 6

Pulizia

Spolverare delicatamente e in caso di macchie lievi passare la superficie con un panno umido o con una soluzione di detergente neutro, risciaquando con acqua, senza strizzare. Lasciare asciugare evitando l'esposizione diretta alla luce del sole. Per le macchie localizzate e più ostinate, discogliere tempestivamente la macchia con alcool etilico diluito in acqua al 20%, tamponare e trattare successivamente con una soluzione di detergente neutro, risciaquare bene.

Omologazioni

I UNI 9175 classe 1 IM

UK BS 5852-1 part I

USA TB 117:2013

EN EN 1021-2

Differenze colore

Leggere differenze di colore fra una partita e l'altra sono da considerarsi normali.

Composition

69% PVC 1% PU 30% COT/PES

Weight

gr./m² 520

Thickness

mm. 0.90

Width

cm. 140

Abrasion test - Martindale Test

ISO 12947 (9kpa) 50.000 turns

Lightfastness

UNI EN ISO 105-B02 6

Cleaning

Dust gently and in case of light stains, pass the surface with a damp cloth or a neutral detergent, rinse with water without squeezing. Let the fabric dry inside out avoiding direct exposure to the sunlight. For small located and more obstinate stains, dissolve immediately with clear ethylic alcohol diluted in water to 20%, dab and then treat with a neutral detergent solution. Rinse abundantly.

Approvals

I UNI 9175 classe 1 IM

UK BS 5852-1 part I

USA TB 117:2013

EN EN 1021-2

Differenze colore

Slight differences between colour batches have to be considered normal.

Diemme.

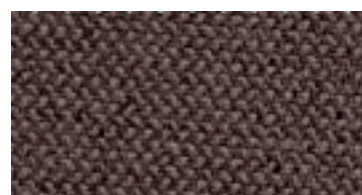
ERA / CAT. S



CSE01



CSE02



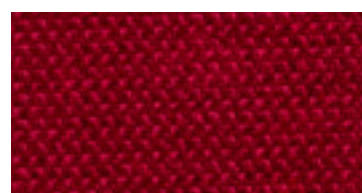
CSE21



CSE03



CSE05



CSE06



CSE19



CSE09



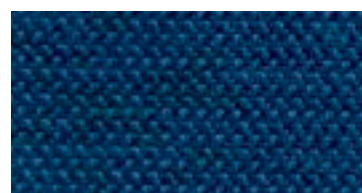
CSE16



CSE20



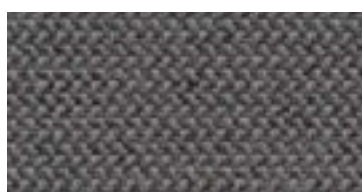
CSE10



CSE15



CSE11



CSE13



CSE14

Composizione

100% Poliestere
Coloranti non metallici

Altezza

140 cm

Peso

320g/m² ± 5%

Resistenza all'abrasione

100.000 cicli Martindale

Omologazioni

BS EN 1021 - 1:2014 (sigaretta)
BS EN 1021 - 2:2014 (fiammifero)
BS 7176:2007 Low Hazard
Note: le prestazioni di infiammabilità dipendono dalla schiuma utilizzata

Solidità alla luce

ISO 105 - B02:2014 5

Pulizia

Aspirare regolarmente. Pulizia a secco professionale o pulire con un panno umido.

Differenze Colore

Leggere differenze di colore fra un bagno e l'altro sono da considerarsi normali.

Composition

100% Polyester
Non metallic dyestuffs

Width

140 cm

Weight

320g/m² ± 5%

Abrasion resistance

100.000 Martindale cycles

Approvals

BS EN 1021 - 1:2014 (cigarette)
BS EN 1021 - 2:2014 (match)
BS 7176:2007 Low Hazard
Note: Flammability performance is dependent on foam used

Light Fastness

ISO 105 - B02:2014 5

Cleaning

Vacuum regularly. Professionally dry clean or wipe clean with a damp cloth.

Colour Differences

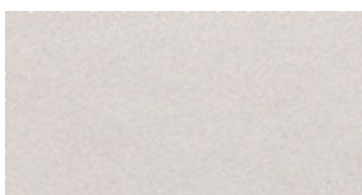
Slight differences between colour batches have to be considered normal.

Diemme.

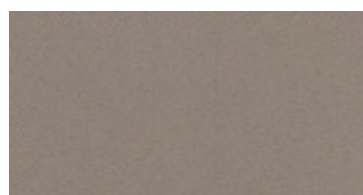
IKON / CAT. TOP



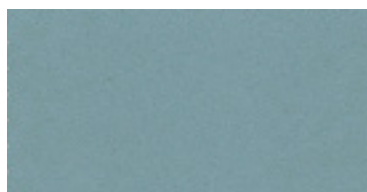
130



230



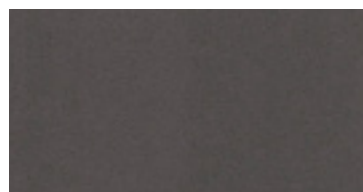
330



1730



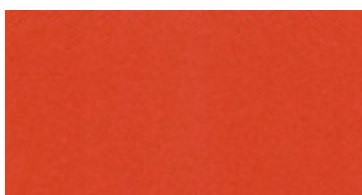
1830



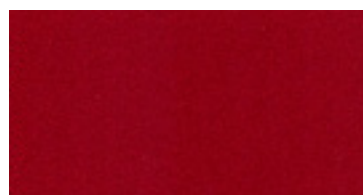
430



1030



1130



1230



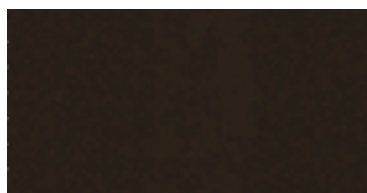
2430



930



1430



630



2230

IKON / CAT. TOP

Trattamento **ULTRA-FRESH** antibatterico e antiacaro.

Composizione

Poliuretano 63% - Cotone 29% - Poliestere 8%

Peso

480 g/m² ± 5%

Altezza

140 cm

Resistenza all'abrasione - Test Martindale

UNI EN ISO 12947-2 150.000 cicli

Solidità alla luce

UNI EN ISO 105-B02 5-6

Pulizia

Spolverare delicatamente e in caso di macchie lievi passare con un panno umido o con una soluzione di detergente neutro, risciaquando con acqua, senza strizzare.

Per le macchie localizzate e più ostinate (olio, grasso, cosmetici, inchiostro, caffè, liquori, chewing-gum ecc.) Si consiglia di seguire le seguenti istruzioni. Disciogliere tempestivamente la macchia con alcol etilico diluito (liquido incolore) in acqua al 20%, tamponare e trattare successivamente con una soluzione di detergente neutro, risciaquare bene.

Omologazioni

I UNI 9175 classe 11M

UK BS 5852-1

UK BS 5852

UK sezione 4 CRIB 5

EN EN 1021-2

Differenze colore

Leggere differenze di colore fra una partita e l'altra sono da considerarsi normali.

ULTRA-FRESH treatment, antimicrobial and antiacarus.

Composition

Polyurethane 63% - Cotton 29% - Polyester 8%

Weight

480 g/m² ± 5%

Width

140 cm

Abrasion test - Martindale test

UNI EN ISO 12947-2 150.000 turns

Lightfastness

UNI EN ISO 105-B02 5-6

Cleaning

Dust gently and in case of light stains pass the surface with a damp cloth or a neutral detergent, rinse with water without squeezing. The following instructions are recommended for small located and more obstinate stains(oil, fat, cosmetics, ink, coffee, liquor, chewing-gum etc.): dissolve immediately with clear ethylic alcohol diluted in water to 20%, dab and then treat with a neutral detergent solution. Rinse abundantly.

Approvals

I UNI 9175 11M class

UK BS 5852-1

UK BS 5852

UK 4 CRIB 5 section

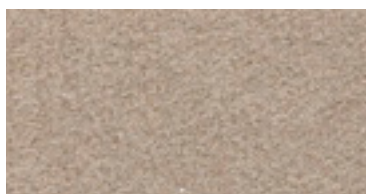
EN EN 1021-2

Colour differences

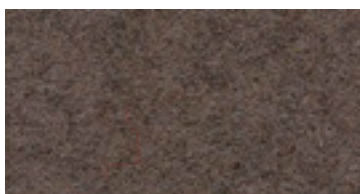
Slight color differences between one lot and another have to be considered within commercial tolerance.

Diemme.

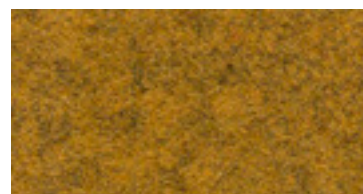
BLAZER / CAT. EXTRA



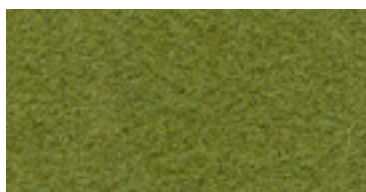
CUZ47



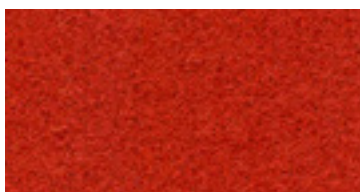
CUZ31



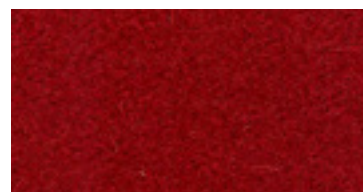
CUZ82



CUZ1F



CUZ39



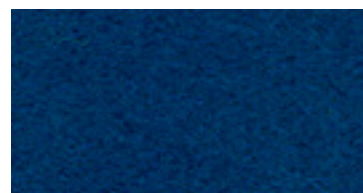
CUZ13



CUZ53



CUZ02



CUZ26



CUZ28



CUZ30



CUZ08

BLAZER / CAT. EXTRA

Composizione

100% Lana Vergine

Peso

460 g/m² ± 5%

Altezza

140 cm

Resistenza all'abrasione - Test Martindale

UNI EN ISO 12947-2 50.000 cicli

Omologazioni

UK BS EN 1021-1: 2006 (sigaretta)

UK BS EN 1021-2: 2006 (fiammifero)

UK BS 7176: 2007 Low hazard

I UNI 9175 classe 1IM

Solidità alla luce

UNI EN ISO 105-B02 5

Pulizia

Aspirare regolarmente. Pulizia a secco professionale in alternativa pulire con un panno umido.

Differenze colore

Leggere differenze di colore fra una partita e l'altra sono da considerarsi normali.

Composition

100% Virgin Wool

Weight

460 g/m² ± 5%

Width

140 cm

Abrasion test - Martindale Test

UNI EN ISO 12947-2 50.000 turns

Approvals

UK BS EN 1021-1: 2006 (cigarette)

UK BS EN 1021-2: 2006 (match)

UK BS 7176: 2007 Low hazard

I UNI 9175 1IM class

Lightfastness

UNI EN ISO 105-B02 5

Cleaning

Vacuum regularly. Professionally dry clean or wipe clean with a damp cloth.

Colour differences

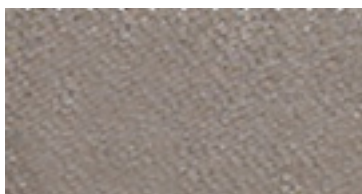
Slight color differences between one lot and another have to be considered within commercial tolerance.

Diemme.

GORGEOUS / CAT. EXTRA



2103



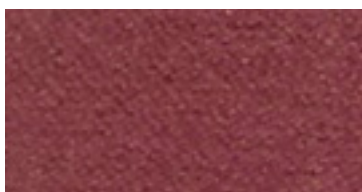
2102



2106



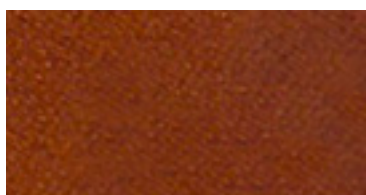
2158



2113



2120



2111



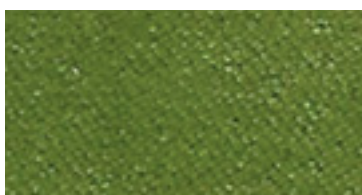
2116



2126



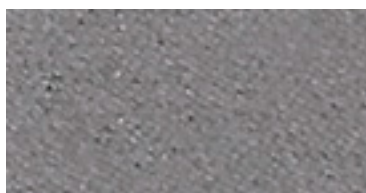
2140



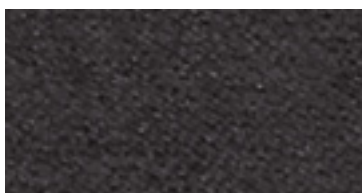
2139



2135



2152



2151



2147

GORGEOUS / CAT. EXTRA

Composizione

100% PES FR
TREVIRA CS

Altezza

140 cm

Peso

450g/m²

Resistenza all'abrasione - Test Martindale

UNI EN ISO 12947-2 100.000 cicli

Omologazioni

UNI 9175 classe 1/M

UNI 9177 classe 1

M1

DIN 4102 - B1

BS 5852 Crib 5

TB117 sez. E p. 1 (California)

EN 1021 part. 1-2

Solidità alla luce

UNI EN ISO 105-B02 5

Pulizia

Aspirare regolarmente. Pulizia a secco professionale, in alternativa pulire con un panno umido.

Lavaggio



Differenze Colore

Leggere differenze di colore fra un bagno e l'altro sono da considerarsi normali.

Composition

100% PES FR
TREVIRA CS

Width

140 cm

Weight

450g/m²

Abrasion test - Martindale Test

UNI EN ISO 12947-2 100.000 turns

Omologazioni

I UNI 9175 classe 1/M

I UNI 9177 classe 1

F M1

D DIN 4102 - B1

UK BS 5852 Crib 5

USA TB117 sez. E p. 1 (California)

EN EN 1021 part. 1-2

Light Fastness

UNI EN ISO 105-B02 5

Cleaning

Vacuum regularly. Professionally dry clean or wipe clean with a damp cloth.

Washing

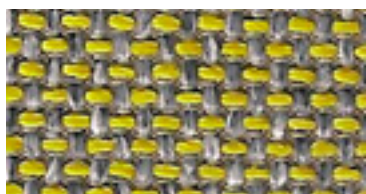


Colour Differences

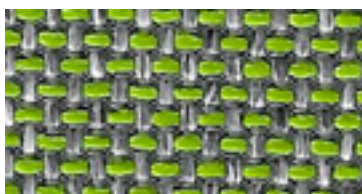
Slight differences between colour batches have to be considered normal.

Diemme.

HESTAN / CAT. EXTRA



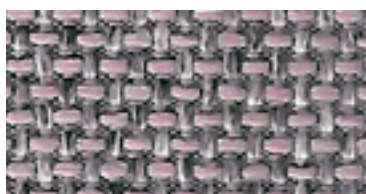
7035.19



7035.22



7035.28



7035.30



7035.23



7035.03

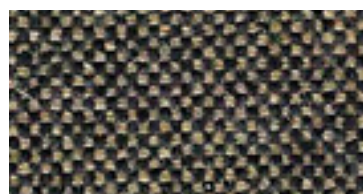
WOLIN / CAT. EXTRA



7050.43



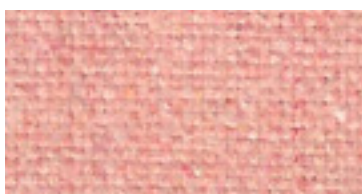
7050.38



7050.19



7050.30



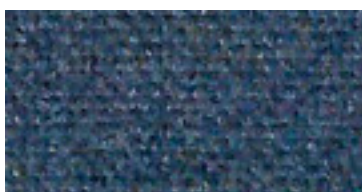
7050.31



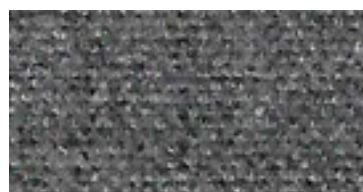
7050.36



7050.03



7050.06



7050.22

HESTAN / CAT. EXTRA

Composizione / Composition

100% poliestere ignifugo
100% Flame retardant polyester

Peso / Weight

± 570 g/m¹

Altezza / Width

cm 140

Abrasione - Test Martindale / Abrasion - Test Martindale

ISO 12947-2 60000 cicli/turns ± 20%

Solidità Luce / Lightfastness

ISO 105-B02 6 (scale 1-8)

Pulizia / Cleaning

Non spazzolare e usare con regolarità l'aspirapolvere
Do not brush and use the vacuum-cleanr regularly

Lavaggio / Washing



Omologazioni / Approvals

- I** UNI 9175, classe 1
- F** NF P92/503-507, M1
- D** DIN 4102, B1
- UK** BS 5852, crib 5
- USA** Cal TB 117
- EN** EN 1021/1-2

Differenze colore / Colour differences

Leggere differenze di colore fra un bagno e l'altro sono da considerarsi normali.
Slight differences between colour batches have to be considered normal.

WOLIN / CAT. EXTRA

Composizione / Composition

75% Wool/Lana 20% Poliestere/Polyester
5% Poliammide/Polyamide

Peso / Weight

± 638 g/m¹

Altezza / Width

cm 150

Abrasione - Test Martindale / Abrasion - Test Martindale

ISO 12947-2 100.000 cicli/turns ± 20%

Solidità Luce / Lightfastness

ISO 105-B02 6 (scale 1-8)

Pulizia / Cleaning

Non spazzolare e usare con regolarità l'aspirapolvere
Do not brush and use the vacuum-cleanr regularly

Lavaggio / Washing



Omologazioni / Approvals

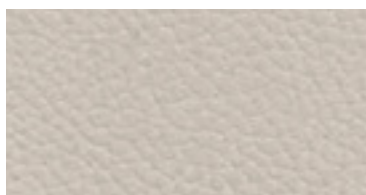
- I** UNI 9175, classe 1
- F** NF P92/503-507, M2
- D** DIN 4102, B2
- UK** BS 5852, crib 5
- USA** Cal TB 117
- EN** EN 1021/1-2

Differenze colore / Colour differences

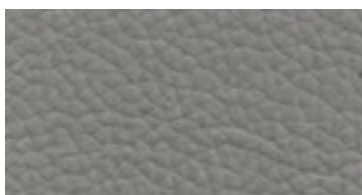
Leggere differenze di colore fra un bagno e l'altro sono da considerarsi normali.
Slight differences between colour batches have to be considered normal.

Diemme.

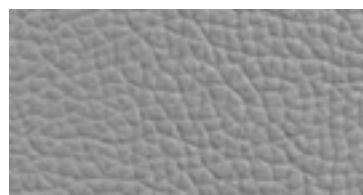
POLO / CAT. FIESTA



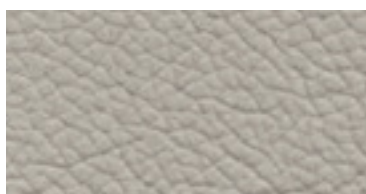
872



827



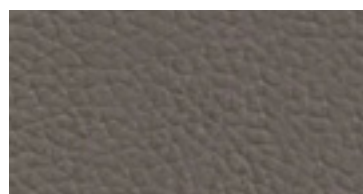
854



930



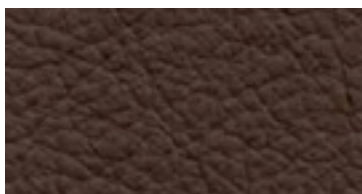
933



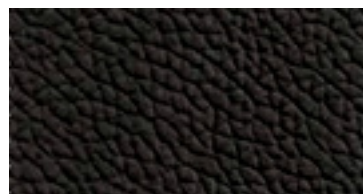
931



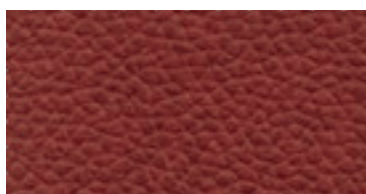
838



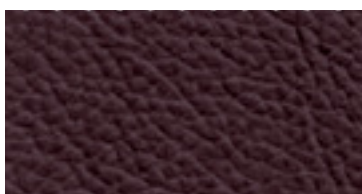
824



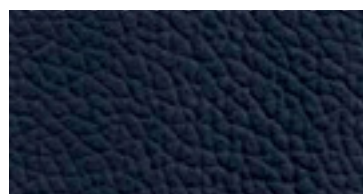
825



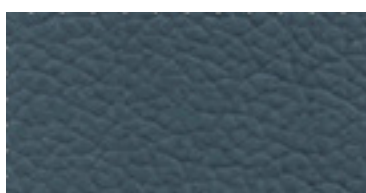
840



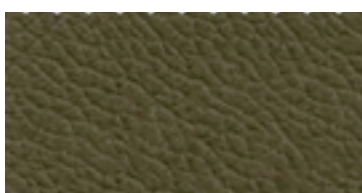
850



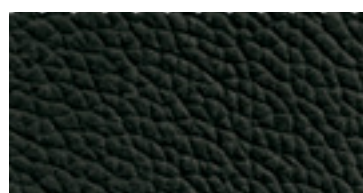
856



878



881



832

POLO / CAT. FIESTA

Caratteristiche

Pelle bovina di provenienza Europea, conciata al cromo tintura passante in botte e fiore leggermente smerigliato. Tutte le lavorazioni sono effettuate con la massima attenzione alla qualità del prodotto e al rispetto dell'ambiente mediante utilizzo di prodotti a norma CEE. **Le eventuali piccole imperfezioni, cicatrici ed irregolarità di stampa non sono da considerarsi difetti ma pregi che determinano la garanzia della vera pelle.**

Spessore

0,9 - 1,0 mm

Pulizia e manutenzione

Per la normale pulizia spolverare periodicamente con un panno pulito, morbido e asciutto. Eventuali macchie possono essere rimosse usando un panno pulito imbevuto in una soluzione d'acqua e sapone neutro bianco. Evitare di strofinare la superficie da trattare, ma tamponare, dall'esterno verso l'interno della macchia. Non asciugare la pelle alla luce del sole o con l'asciugacapelli. Non utilizzare mai sostanze detergenti non consigliate in quanto possono danneggiare il rivestimento in pelle causando crepe o scolorimento. Per mantenere vivo il colore del rivestimento, evitare l'esposizione del manufatto in pelle alla luce diretta del sole.

Differenza Colore

I prodotti chimici necessari alla produzione della pelle, utilizzati per la concia, la tintura e la rifinitura dei grezzi, non contengono sostanze nocive alla salute ed all'ambiente. Per motivi tecnici non è possibile garantire la stessa tonalità del colore tra una partita e l'altra.

Characteristics

First choice corrected quality European fine bovine leather, chromium tanned in barrel and grain surface lightly sanded. All our working methods are carried out respecting the environment and meet CEE standard duties. **Flaws and irregularities are not to be considered as defects, but qualities that guarantee "true leather".**

Thickness

0,9 - 1,0 mm

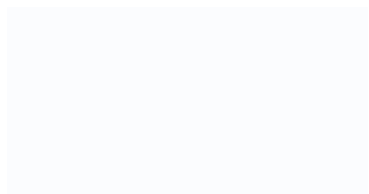
Cleaning and care

For normal cleaning just dust the leather with a clean, soft dry cloth. Any stains can be removed using a damp cloth and mild white detergent. Do not rub the surface but dab it from the outside towards the inside of the stain. Do not dry the leather in the sunlight or with a hair dryer. Do not use detergents that are not specific for leather, as they can damage the surface causing it to crack or fade. To keep the colours bright, do not expose the leather to direct sunlight.

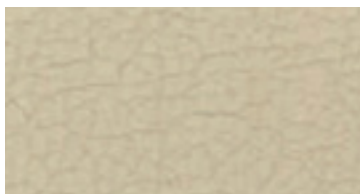
Colour Differences

The chemicals needed for the production of leather, used for the tanning, the dyeing and the finishing of the raw hides, do not contain substances which can be harmful for health or the environment. Due to technical reasons it is not possible to guarantee the same tonality of colour from one bath to another.

Diemme.



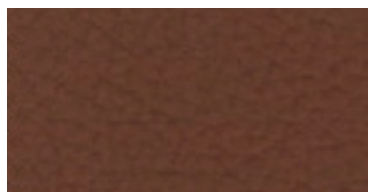
300



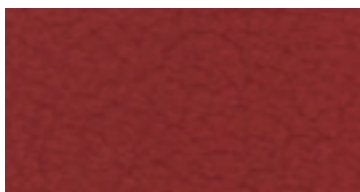
301



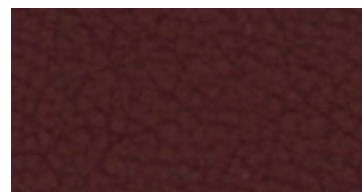
307



304



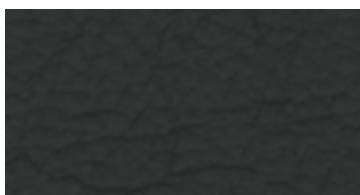
421



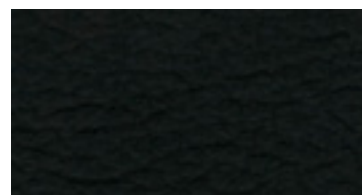
424



468



454

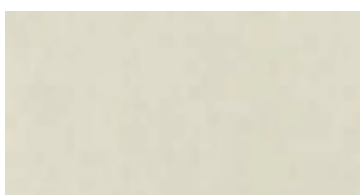


314

NUVOLA



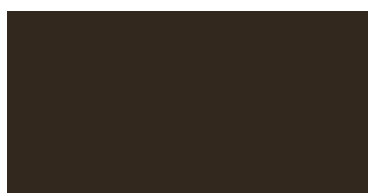
117



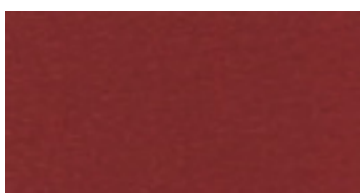
158



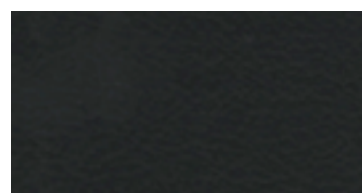
148



175



113



101

FIESTA

Composizione

Pelle bovina di provenienza Europea, conciata al cromo tintura passante in botte e fiore leggermente smerigliato. Tutte le lavorazioni sono effettuate con la massima attenzione alla qualità del prodotto e al rispetto dell'ambiente mediante utilizzo di prodotti a norma CEE. **Le eventuali piccole imperfezioni, cicatrici ed irregolarità di stampa non sono da considerarsi difetti ma pregi che determinano la garanzia della vera pelle.**

*First choice corrected quality European fine bovine leather, chromium tanned in barrel and grain surface lightly sanded. All our working methods are carried out respecting the environment and meet CEE standard duties. **Flaws and irregularities are not to be considered as defects, but qualities that guarantee "true leather"***

Spessore / Thickness

0,8 - 0,9 mm

Pulizia/Cleaning

Per lo **sporco normale** si consiglia:

Utilizzare acqua pura

Tamponare e assorbire se pressione

Non strofinare

*For every **day grime** it is advisable to:*

Use water

Dot and absorb without pressure

Do not rub

Manutenzione / Care

Usare l'aspirapolvere

Arieggiare l'ambiente nei giorni umidi

Non usare prodotti chimici

Use vacuum cleaner

Air the room

Never use chemical products

La pelle vi ringrazia se / Leather thanks if:

Evitare l'esposizione diretta al sole

Evitare l'essiccamento

Evitare il calore diretto

Avoid direct exposure to sun-light

Do not place in very dry environments

Avoid direct heat

Differenze Colore

Leggere differenze di colore fra un bagno e l'altro sono da considerarsi normali.

Slight differences between colour batches have to be considered normal.

NUVOLA

Composizione

La qualità della Pelle NUVOLA, deriva da una migliore scelta dei grezzi di origine Europea e da una maggiore attenzione in tutte le fasi della lavorazione. I prodotti usati per la concia, per la tintura, e per il finissaggio rispettano pienamente le normative CEE e non contengono sostanze nocive per la salute. **Le eventuali piccole imperfezioni, cicatrici o irregolarità di stampa non sono da considerarsi difetti ma pregi che determinano la garanzia della vera pelle.**

*The quality of NUVOLA Leather is due to a better choice of bovines coming from Europe and to a greater attention during all the working process. The products used for tanning, dyeing and finishing are in conformity with CEE rules and they are not toxic for human health. **Flaws and irregularities are not to be considered as defects, but qualities that guarantee "true leather"**.*

Spessore / Thickness

1,0 - 1,2 mm

Pulizia/Cleaning

Normale pulizia

Usare un panno imbevuto di latte scremato e di acqua in uguale misura

Molto Sporco

Usare una soluzione di sapone di Marsiglia diluita in acqua tiepida, strofinare leggermente con una spugna pulita e imbevuta di acqua.

Normal cleaning

Soak a clean cloth in some skimmed milk and water and gently rub over the surface.

Very dirty

Use a sponge soaked in luke warm and neutral soap and gently rub over the surface.

Manutenzione / Care

Non utilizzare mai i comuni detersivi o preparati vari per le pulizie in genere. Non trattare la pelle con oli di varia natura.

Never use common detergents or other products for cleaning. Do not use oil of different composition.

La pelle vi ringrazia se / Leather thanks if:

Evitare l'esposizione diretta al sole

Evitare l'essiccamento

Evitare il calore diretto

Avoid direct exposure to sun-light

Do not place in very dry environments

Avoid direct heat

Omologazioni / Approvals

BS EN 1021-1: 1994

BS EN 1021-2

California test

Differenze Colore

Leggere differenze di colore fra un bagno e l'altro sono da considerarsi normali.

Slight differences between colour batches have to be considered normal.

Diemme.

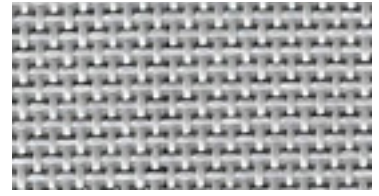
RETI AUCKLAND / FIT / SOCIAL



FB0538



FN0538



FG0538

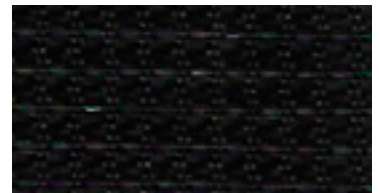
RETI GOAL / HOP / LEAD / NEW BONN / SKIN / SOCIAL



1001



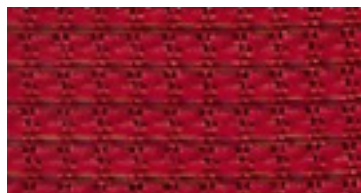
8043



8033



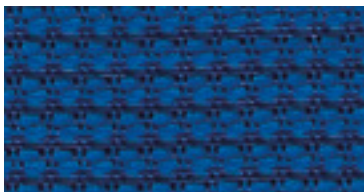
3029



4008



7041



6015

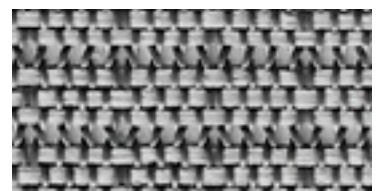


8089

RETI LIBERTY



NK-00



NK-10

RETI AUCKLAND RETI FIT / SOCIAL

Composizione / Composition

PVC 70% - 30% Poliestere/Polyester

Peso / Weight

g/m² 560

Resistenza alla fatica / Fatigue strength

EN 1728:2000 - EN 15373:2007 - livello 3° severo / 3° hard level
>200.000 cicli/turns / 1.000 N

Abrasione - Test Martindale / Abrasion - Test Martindale

EN ISO 12947-2:1998 >100.000 cicli/turns

Solidità Luce / Lightfastness

UNI EN ISO 105 B02 8 (scala blu / blue scale)
Tolleranza: da 5 a 8 / Tolerance: from 5 to 8

Pulizia / Cleaning

Usare con regolarità l'aspirapolvere
Use the vacuum-cleaner regularly

Lavaggio / Washing

Lavare con acqua e sapone neutro.
Wash with water and neutral soap.

Omologazioni / Approvals

Certificazione OEKO-TEX STANDARD 100
OEKO-TEX STANDARD 100 Certification

Differenze colore / Colour differences

Leggere differenze di colore fra una partita e l'altra sono da considerarsi normali.
Slight color differences between one lot and another have to be considered within commercial tolerance.

RETI GOAL / HOP / LEAD NEW BONN / SKIN / SOCIAL

Composizione / Composition

55% Poliestere/Polyester - 45% Poliammide/Polyamide

Peso / Weight

g/ml 390 ± 5% g/m² 280 ± 5%

Abrasione - Test Martindale / Abrasion - Test Martindale

UNI EN ISO 12947/2 100.000 cicli/turns ± 10%

Solidità Luce / Lightfastness

UNI EN ISO 105 B02 6 (scala blu / blue scale)
Tolleranza: da 5 a 8 / Tolerance: from 5 to 8

Manutenzione e lavaggio / Cleaning and washing



Reazioni al fuoco / Flammability

EN 1021/1

Differenze colore / Colour differences

Leggere differenze di colore fra una partita e l'altra sono da considerarsi normali.
Slight color differences between one lot and another have to be considered within commercial tolerance.

RETI LIBERTY

Composizione / Composition

70% Nylon - 30% Poliestere/Polyester

Peso / Weight

g/m² 420

Solidità Luce / Lightfastness

Xenotest - Lampada ad arco scala di grigi/20AFU - 4.5
Xenotest - Arc Lamp Gray scale/20AFU - 4.5

Abrasione - Test Martindale / Abrasion - Test Martindale

12 kpa (Martindale) 100.000 cicli/turns

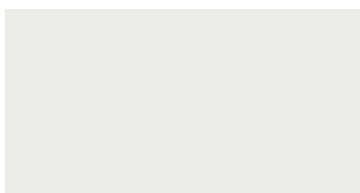
Differenze colore / Colour differences

Leggere differenze di colore fra una partita e l'altra sono da considerarsi normali.
Slight color differences between one lot and another have to be considered within commercial tolerance.

NEW BONN



Nero / Black
RAL 9005



Bianco / White
RAL 9003



Grigio Chiaro / Light Grey
RAL 7040



Antracite / Anthracite
RAL 7024

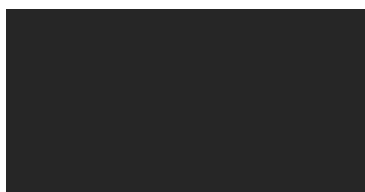


Rosso / Red
PANTONE 201C



Blu / Blue
PANTONE 294C

NO FRILL



Antracite / Anthracite
Simil RAL 7016



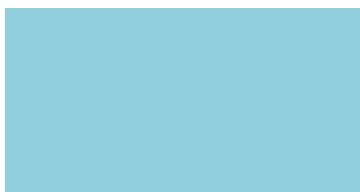
Bianco / White
Simil RAL 9003



Sabbia / Sand
Simil RAL 1015



Giallo Cedro / Yellow
Simil PANTONE 395 5EC



Azzurro / Sky Blue
Simil PANTONE 304 EC

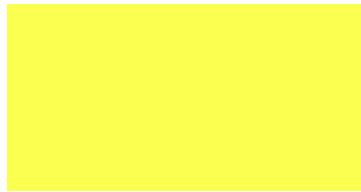
Diemme.

POLIPROPILENE / Polypropylene

NUKE



Bianco / White
Simil RAL 9003



Giallo Cedro / Yellow
Simil PANTONE 395 5EC

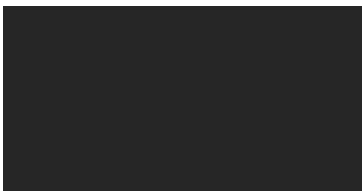


Azzurro / Sky Blue
Simil PANTONE 304 EC

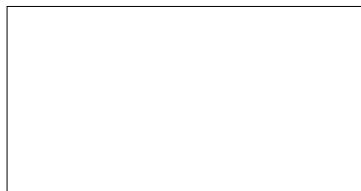


Arancione / Orange
Simil RAL 1028

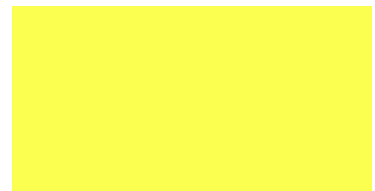
REDHOT



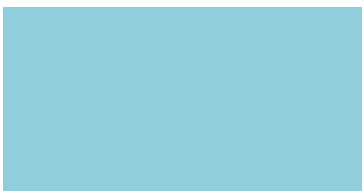
Antracite / Anthracite
Simil RAL 7016



Bianco / White
Simil RAL 9003



Giallo Cedro / Yellow
Simil PANTONE 395 5EC

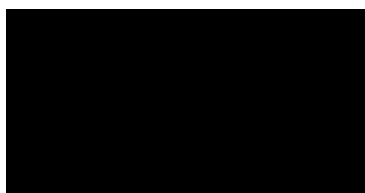


Azzurro / Sky Blue
Simil PANTONE 304 EC

Diemme.

POLIPROPILENE / Polypropylene

SLIM



Nero / Black
Simil RAL 9011



Bianco / White
Simil RAL 9003



Sabbia / Sand
Simil PANTONE 401 EC

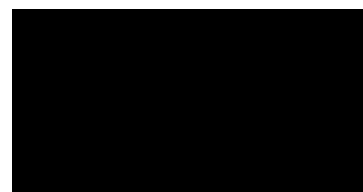


Grigio / Gray
Simil RAL 7040

SUNNY NEW



Bianco / White
Simil RAL 9003



Nero / Black
Simil RAL 9011

Diemme.

POLIPROPILENE / Polypropylene

CLOP



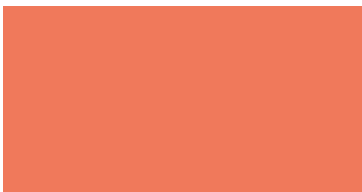
Bianco / White
Simil RAL 9010



Nero / Black
Simil RAL 9011



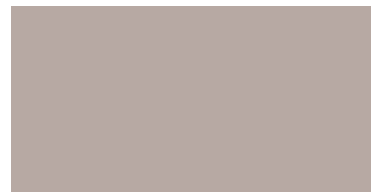
Verde / Green
Simil PANTONE 553 U



Arancione / Orange
Simil RAL 3022 o Pantone 7417U



Azzurro 1010
Light Blue 1010
NCS S 3010-B10G



Beige 572
Beige 572
NCS S 3005-Y80R

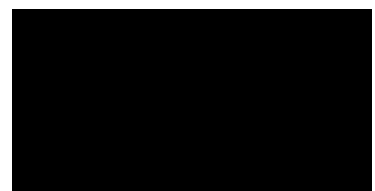


Rosso Scuro 1451
Dark Red 1451
NCS S 3560-Y90R

CLOP / SEDIA IN CUOIO / HIDE



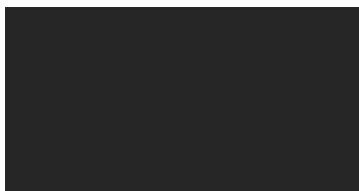
Naturale / Natural



Nero / Black

Diemme. POLIURETANO RIGIDO TECH / Tech Polyurethane

EON

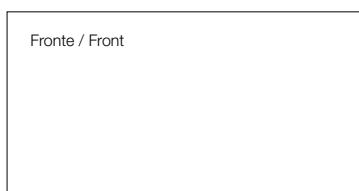


Antracite / Anthracite
Simil RAL 7024

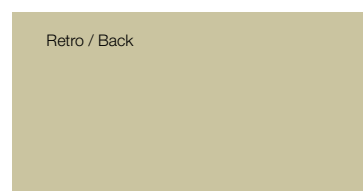


Bianco / White
Simil RAL 9016

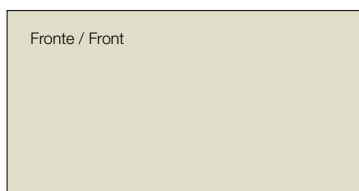
Colori BICOLOR - TWO-COLORS SHELL



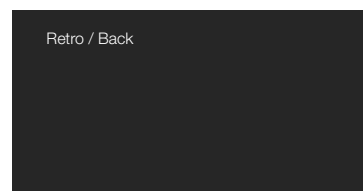
Bianco / White
Simil RAL 9016



Tortora / Beige
RAL 1019



Panna / Cream
Simil RAL 1013



Moka / Chocolate
Simil RAL 8019

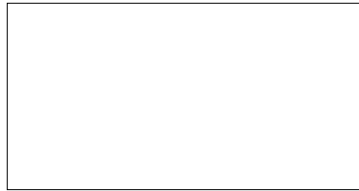
Diemme.

POLIETILENE / Polyethylene

MARGARITA / SEDIA / CHAIRS



Antracite / Anthracite
Simil PANTONE 425 C



Bianco / White
Simil RAL 9010



Grigio / Grey
Simil PANTONE 413 EC



Giallo / Yellow
Simil PANTONE 130 EC



Rosso / Red
Simil PANTONE 201C



Verde / Green
Simil PANTONE 583C

MARGARITA / TAVOLO / TABLE



Antracite / Anthracite
Simil PANTONE 425 C



Bianco / White
Simil RAL 9010

Diemme.